



# VP2000

## Vapor Phase Soldering Systems

### High-Performance Inline Systems for Large Series

ASSCON vapor phase reflow soldering systems set standards in soldering technology. The VP2000 inline series are based on advanced patented high-tech soldering methods, and offer outstanding soldering quality in large series production.

#### VP2000 INLINE

The innovative inline soldering system for large series users is based on the highly successful oxygen-free process used in all ASSCON soldering systems, in which oxygen is excluded from the pre-heating and soldering process. Components are produced in the highest standard of quality. Production is also supported by dynamic profiling – a process for automatically controlling the optimum soldering profile in series production.

The system is designed for bare-board product processing on large series production lines. Electrically width-adjusted conveying systems and center support permit fast straight-forward adjustment for flexible production. The system is modularly designed, and consists of loading station, soldering and cooling zones.

#### OPTIMUM TEMPERATURE CONTROL

The use of liquid or vapor for as a mean of energy transmission is far more effective than convection. The vapor condenses on the solder product, the condensate encapsulates it completely, and thus transmits the energy. The entire pre-heating and soldering process takes place in an oxygen-free environment. Product overheating, component damage or PCB delamination cannot occur. An optimum temperature is automatically guaranteed at all positions on the product thanks to infinite sensor-based temperature gradient controlling.

#### PRODUCT BENEFITS

- perfect solder joints thanks to the use of advanced technology
- reproducible process conditions
- no overheating or destruction of electronic components
- low energy costs thanks to smart energy management
- low overall running costs
- full traceability capability
- product changing without waiting times
- dual lane conveying for particularly high processing rates

**70 %**

less energy  
consumption

**5.1 kWh**

average  
energy  
consumption\*

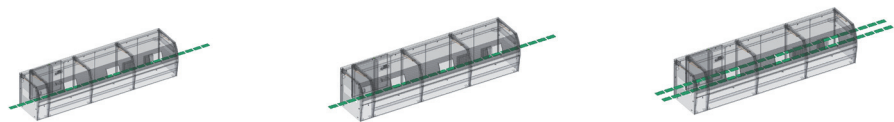
\* per h/measured on VP2000-100

# VP2000 inline

## Vapor Phase Soldering Systems for Large Series

RANGE OF APPLICATION

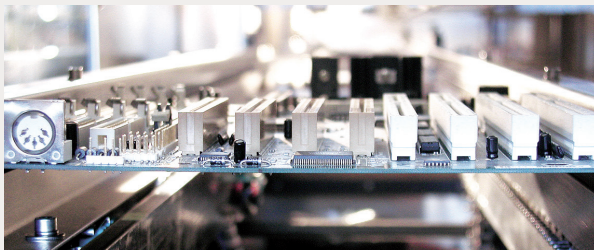
INLINE OPERATION | SERIES PRODUCTION | LARGE SERIES



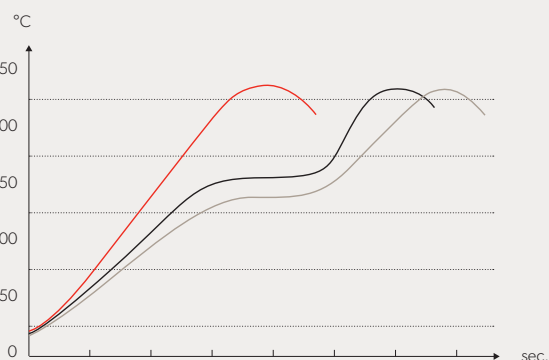
PRODUCT	VP2000 - 210	VP2000 - 310	VP2000 - 410
TECHNICAL DATA			
Transport	single lane	single lane	dual lane
Max. solder product format	600 x 520mm	600 x 520mm/620 x 620mm	620 x 275mm x 2
Longboard	1200x520mm	1500x620mm	
Component height	up to 90mm	up to 90mm	up to 90mm
Ready for use	ca. 30min	ca. 30min	ca. 30min
Connecting power	10kW	15kW	15kW

### SPECIAL FEATURES

Depending on the version, the VP2000 inline can process products sized from 600 x 520mm up to 620 x 465mm/620 x 2 x 275mm. They achieve high processing rates in inline mode. The systems can be combined with dynamic profiling as series.



The systems are equipped with electrically width-adjusted conveying systems and center support.



The VP2000 inline permit infinite adjustment of specified temperature gradients.

[asscon.de](http://asscon.de)

ASSCON Systemtechnik-Elektronik GmbH  
Messerschmittring 35 • 86343 Königsbrunn • Germany  
P +49 8231 .95991 .0 • F +49 8231 .95991 .90